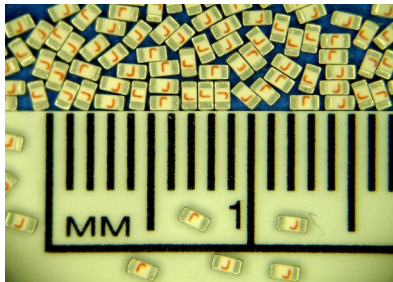


## SolidMatrix® Surface Mount Fuses

### SB Series (Slow Blow), 0603 Size



#### Features:

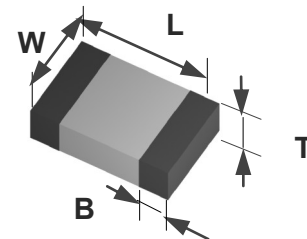
- High inrush current withstanding capability
- Ceramic Monolithic structure
- Silver fusing element and silver termination with nickel and tin plating
- Symmetrical design with marking on both sides (optional)
- Operating temperature range: -55°C to +125°C (with de-rating)

#### Clearing Time Characteristics:

% of Current Rating	Clearing time at 25°C	
	4 hours min.	120 seconds max.
100%	4 hours min.	
200%	1 second min.	120 seconds max.
300%	0.1 seconds min.	3 seconds max.
800% (1 A - 1.5 A)	0.0005 seconds min.	0.05 seconds max.
800% (2 A - 8 A)	0.001 seconds min.	0.05 seconds max.

#### Shape and Dimensions:

Unit	Inch	mm
L	0.063 ± 0.006	1.60 ± 0.15
W	0.031 ± 0.006	0.80 ± 0.15
T	0.031 ± 0.006	0.80 ± 0.15
B	0.014 ± 0.006	0.36 ± 0.15



#### Agency Approval:

Recognized Under the Components Program of UL.  
File Number: E232989.

#### Patents:

Patent numbers "US6,034,589", "US6,602,766", "US7,268,661 B2", "ZL00134544.3", "ZL02114719.1", "ZL200410104280.7", "ZL201020551352.3", "ZL201020551360.8", "ZL201010299185.2", "ZL201220030614.0", "ZL201210020693.1.

#### Ordering Information:

Part Number	Current Rating (A)	Voltage Rating (VDC)	Interrupting Ratings	Nominal Cold DCR(Ω) <sup>1</sup>	Nominal I <sup>2</sup> t (A <sup>2</sup> s) <sup>2</sup>	Marking (Optional) <sup>3</sup>
F0603SB1000V032T	1.0	32	50 A at rated voltage	0.200	0.093	E
F0603SB1500V032T	1.5	32		0.100	0.18	G
F0603SB2000V032T	2.0	32		0.052	0.32	I
F0603SB2500V032T	2.5	32		0.041	0.63	J
F0603SB3000V032T	3.0	32		0.031	0.87	K
F0603SB3500V032T	3.5	32		0.021	1.20	L
F0603SB4000V032T	4.0	32		0.017	2.30	M
F0603SB4500V032T	4.5	32		0.015	2.70	T
F0603SB5000V032T	5.0	32	80 A at rated voltage	0.013	3.20	N
F0603SB6000V032T	6.0	32		0.010	4.00	O
F0603SB7000V032T	7.0	32		0.008	5.00	P
F0603SB8000V032T	8.0	32		0.006	7.00	R

1. Measured at ≤ 10% rated current and 25°C ambient.

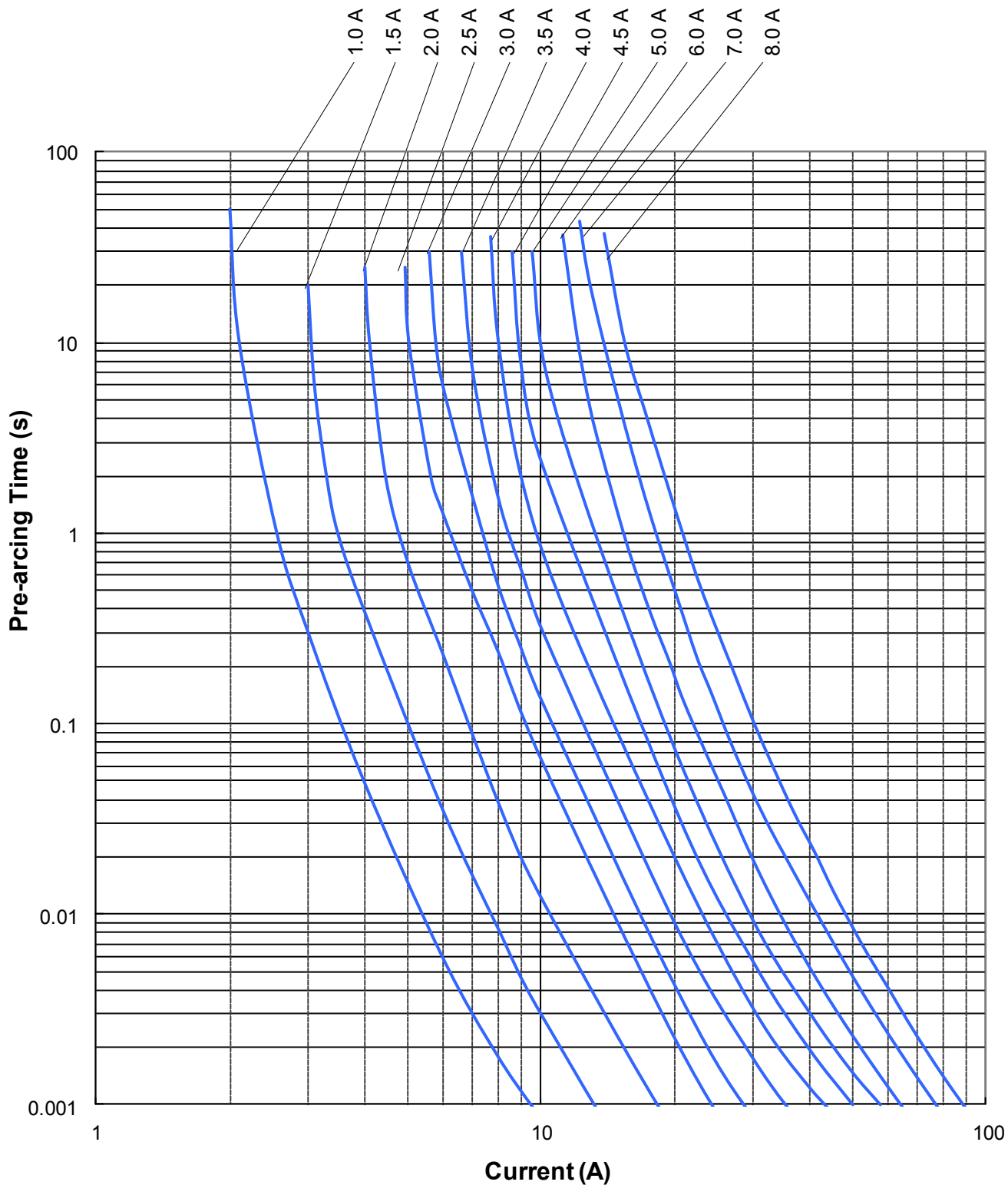
2. Melting I<sup>2</sup>t at 0.001 second pre-arcing time.

3. Red Marking Character Code.

# SolidMatrix<sup>®</sup> Surface Mount Fuses

## SB Series (Slow Blow), 0603 Size

### Average Pre-arcing Time Curves:



# SolidMatrix<sup>®</sup> Surface Mount Fuses

## SB Series (Slow Blow), 0603 Size

### Average $I^2t$ vs. $t$ Curves:

